



www.heliforklift.net

HELI

CDD 16/20 A2FDLIH

H Series 1.6-2.0t Double Lifting
Electric Pallet Stacker With
Foldable Platform



ANHUI HELI CO., LTD.

Add / No.668, FangXing Road, Hefei, China
Fax / +86-551-63639966

Tel / +86-551-63639068 (North America); 63634335 (Latin America);
63639258 (Europe); 63639358 (Asia); 63662105 (Africa& Middle East);
63648352 (Eurasia); 63629143 (Oceania)

E-mail / heli@heliforklift.net



LinkedIn



YouTube



Facebook

Design&Print:FokellPrinting_20260429

* Our products are subject to improvements and changes without notice.



COMFORT AND ENERGY SAVING



STABLE AND RELIABLE



INTELLIGENT SECURITY



CONVENIENT MAINTENANCE



Appearance

The entire machine features sleek and robust exterior lines, incorporating the principles of ergonomics in industrial design, resulting in more comfortable operation.

Performance

24V AC platform with proportional control offers superior performance, smooth operation, and improved efficiency.

Efficiency

Dual-pallet handling is more efficient and applicable to a wider range of scenarios.

CDD 16/20-A2FDLIH
H Series 1.6-2.0t Double Lifting
Electric Pallet Stacker With Foldable Platform



Optional built-in charger with European standard plug



The charging port is located on the side, eliminating the need to disconnect the entire device, making charging convenient.



TECHNICAL ADVANTAGES



Single work shift for **7.6h**, meeting the requirement of an **8h** work schedule



Standard configuration of charger Fast charging.



The battery comes standard with electric heating, easily tackling cold environments.



Side-pull battery, easy to replace

Model	Battery configuration		Discharge time (h, 100% to 10%)	Charging time (h, 10% to 100%)		Charging energy consumption (kWh) 10% to 100%
				External 100A charger	Built-in 50A charger	
CDD16-A2FDLIH	Standard	24V/300Ah	7.6	3.0	6.0	6.9
	Optional	24V/205Ah	5.2	2.0	4.0	4.7
CDD20-A2FDLIH	Standard	24V/350Ah	8.9	3.5	7.0	8.1
	Optional	24V/404Ah	9.5	4.0	8.0	9.2

ROBUST PERFORMANCE

Travel speed

Unladen **9km/h** / Laden **7km/h**

Gradeability

Unladen **16%** / Laden **6%**

Lift speed

Unladen **270mm/s** / Laden **140mm/s**

**AC traction motor , ZF transmission,
Strong power operation performance**

Featuring a ZF transmission for reliable operation, an AC traction motor for superior driving performance, and electronic steering for comfortable handling

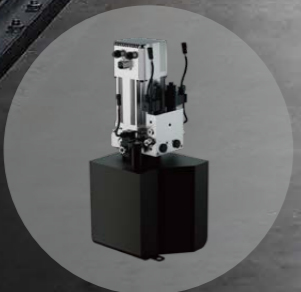
**ZAPI controller, precise and stable control,
safe and reliable**

The vehicle is equipped with a ZAPI controller, ensuring precise control and reliable quality. Additionally, it features a low-noise cooling fan, making the vehicle capable of handling any working condition without hesitation



**High performance proportional control system,
comprehensively improving loading and unloading performance**

The vehicle utilizes a CE-certified proportional control handle combined with a proportional valve pump station, which significantly enhances micro-control performance, making the overall loading and unloading operations smoother and more stable.



INTELLIGENT SECURITY

Equipped with loading operation safety system

The vehicle's travel speed varies depending on the height of the mast lift.

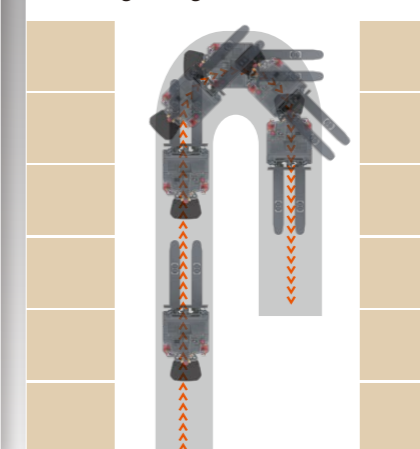
The vehicle automatically switches to slow-speed mode when the mast is raised to 1.2m.



The vehicle's operating speed varies depending on the handle control mode.



Standard configuration of speed limiting during turns.



Equipped with adaptive damping steering system

It can achieve emergency stopping in critical situations and briefly reverse operation upon handle touch, ensuring driver safety.

Equipped with adaptive damping steering system

Linking the steering force of the tiller to the vehicle speed: the faster the vehicle speed, the greater the steering force, further ensuring operational safety.



Equipped with a driver stand-on sen sing safety system.

Similar to the counterbalance truck OPS system, it enables safe operation control and secure loading control in the driver stand-on mode.



STABLE AND RELIABLE



H-Beam Mast



Utilizing H-beam steel, the mast is more robust, providing a broader field of vision.

The Handle Height is Adjustable



The handle height is adjustable to suit people of different heights.

Modular System



The vehicle adopts a modular design, enabling easy on-site assembly, more stable performance and quality, and convenient maintenance.

Integrated Frame Body



Featuring an integrated, frame-type chassis structure, the vehicle's strength and rigidity are enhanced, offering better stability.

EASY MAINTENANCE



With mast mounting points relocated outward, disassembling and installing the mast becomes more convenient, facilitating vehicle transportation, maintenance, and servicing.

Convenient Mast Disassembly and Assembly

Smart Color Green Display

Equipped with an intelligent color screen display, it provides a superior visual experience, making the machine's status clear at a glance. The display features interactive functions, allowing direct parameter query and setup, with simple operation and easy maintenance.



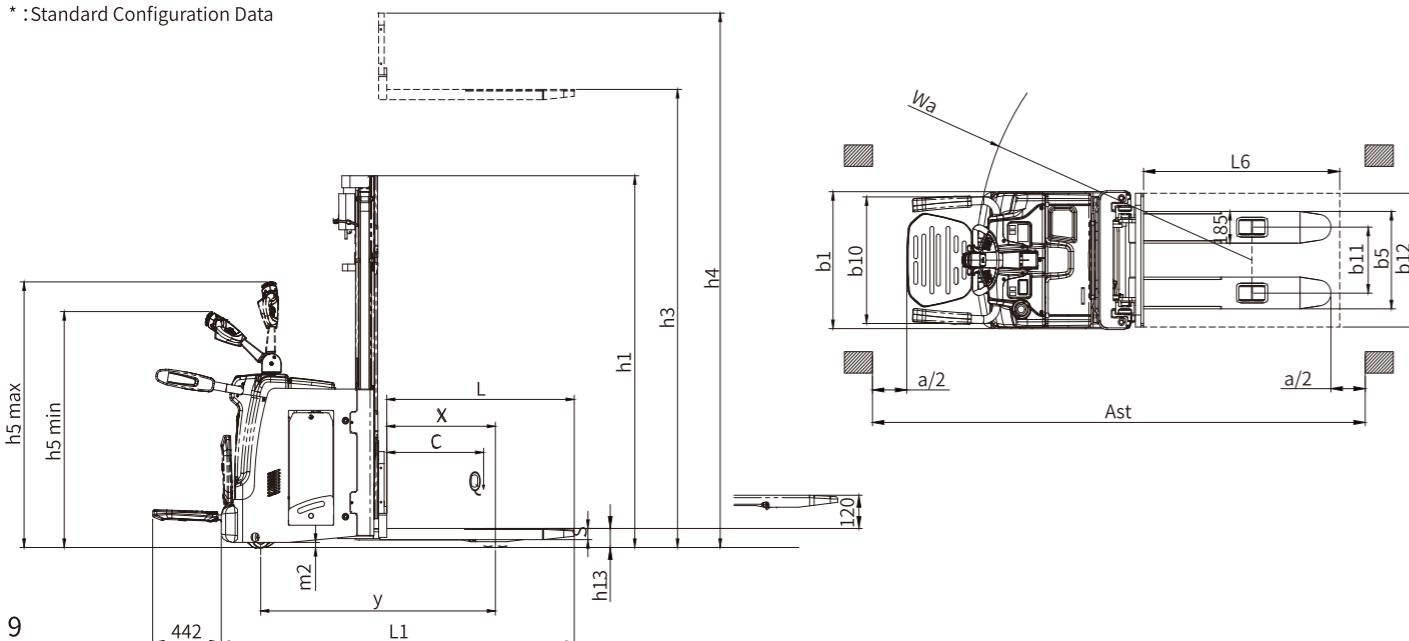
All vehicle systems are modular, simplifying maintenance. Auxiliary wheels can be replaced directly from the inside without hoisting. Drive wheels are equipped with bolt tightening and torque inspection holes, making repair and replacement convenient.

Modular System Assembly

MANUFACTURER AND TECHNICAL DATA

Characteristics				HELI	
1.01	Manufacturer				
1.02	Model	CDD16-A2FDLiH		CDD20-A2FDLiH	
1.03	Drive	Electric (Lithium)		Electric (Lithium)	
1.04	Operation	Stand-on/Pedestrian		Stand-on/Pedestrian	
1.05	Rated capacity	Q	kg	1600	2000
1.06	Load centre distance	C	mm	600	600
1.07	Load distance, centre of support arm wheel to fork	X	mm	665	665
1.08	Wheelbase(Initial lift raised/lowered)	V	mm	1318/1365	1390/1437
Weight					
2.01	Service weight (incl. battery/excl.battery)*		kg	1450/1270	1590/1337
2.02	Axle load laden front/rear*		kg	1068/1982	1257/2333
2.03	Axle load unladen front/rear*		kg	1015/435	1113/477
Wheels / Chassis					
3.01	Tyres	Polyurethane			
3.02	Wheels, number front/back (x=driven)	1x+2/4		1x+2/4	
3.03	Tyre size, front		mm	Ø250×85	Ø250×85
3.04	Additional wheels		mm	Ø125×55	Ø125×55
3.05	Tyre size, rear		mm	Ø85×85	Ø85×85
3.06	Tread width, front	b10	mm	558	558
3.07	Tread width, rear	b11	mm	385	385
Dimensions					
4.01	Height, mast lowered*	h1	mm	2138	2138
4.02	Free lift*	h2	mm	0	0
4.03	Max lifting height*	h3	mm	3000	3000
4.04	Height, mast extended*	h4	mm	3615	3615
4.05	Height of tiller handle in drive position min./max	h5	mm	1170/1390	1170/1390
4.06	Height, fork lowered			90	90
4.07	Overall length (station board stacked/station board lowered)	L1	mm	2088/2530	2160/2602
4.08	Length including fork shank (station board stacked/station board lowered)	L2	mm	938/1380	1010/1452
4.09	Overall width	b1	mm	800	800
4.10	Fork dimensions	s/e/l	mm	70/185/1150	70/185/1150
4.11	Width across forks	b5	mm	570	570
4.12	Ground clearance centre of wheelbase	m2	mm	19.5	19.5
4.13	Aisle width (pallet 1000×1200 sideways)(platform up)	Ast	mm	2461	2533
4.14	Aisle width (pallet 800x1200 length)(platform up)	Ast	mm	2291	2460
4.15	Turning radius(platform up)	Wa	mm	1573	1645
4.16	Initial Lift		mm	120	120
Performance data					
5.01	Travel speed laden/unladen (station board stacked&station board lowered)		km/h	4/4&7/9	4/4&7/9
5.02	Lift speed laden/unladen		mm/s	140/270	130/240
5.03	Lowering speed laden/unladen		mm/s	155/310	400/300
5.04	Max. gradeability laden/unladen (station board stacked&station board lowered)		%	8/16&10/16	5/16&6/16
Battery/E-motor					
6.01	Drive motor, performance S2 60 min		kw	3	3
6.02	Lift motor, performance with S3		kw	3.5	3.5
6.03	Battery voltage/nominal capacity		V/Ah	24/300	24/350
6.04	Battery weight		kg	180	253
Other					
7.01	Drive control type	AC			
7.02	Steering type	Electric			
7.03	Sound level at operator's workstation as per EN12053		dB(A)	55	55

* : Standard Configuration Data



WIDE VIEW MAST

Mast model	Max.lifting height mm	Load capacity (load center 600mm)kg		Mast height h1 mm		Mast weight kg		Note
		1.6t	2t	1.6t	2t	1.6t	2t	
M200	2000	1600	2000	1588	1588	408	413	
M250	2500	1600	2000	1838	1838	440	448	
M270	2700	1600	1850	1938	1938	454	461	
M300	3000	1450	1700	2088	2088	473	482	Standard
M330	3300	1300	1500	2238	2238	493	502	
M350	3500	1100	1300	2338	2338	506	416	
M370	3700	1000	1200	2438	2438	519	531	
M400	4000	900	1100	2588	2588	565	576	
M425	4200	800	1000	2688	2688	579	591	

WIDE VIEW FULL FREE 3-STAGE MAST

Mast model	Max.lifting height mm	Load capacity (load center 600mm)kg		Mast height h1 mm		Free lift (with backrest) mm		Mast weight kg	
		1.6t	2t	1.6t	2t	1.6t	2t	1.6t	2t
ZSM360	3600	1000	1200	1838	1838	1313	1313	578	580
ZSM400	4000	900	1100	1988	1988	1463	1463	608	611
ZSM435	4350	800	950	2088	2088	1563	1563	629	631
ZSM450	4500	750	850	2138	2138	1613	1613	638	641
ZSM470	4700	700	800	2208	2208	1683	1683	653	656
ZSM480	4800	650	750	2238	2238	1713	1713	659	662
ZSM500	5000	600	700	2338	2338	1813	1813	679	683
ZSM540	5400	550	600	2488	2488	1963	1963	733	738
ZSM600	6000	500	550	2688	2688	2163	2163	784	790

Note: Mast weight is the standard configuration weight with 1150x570 fork.

Configuration parameter

Item		1.6t	2t	Item		1.6t	2t
Load backrest	Without load backrest	●	●	Battery capacity	24V/205Ah	○	/
	804X800	○	○		24V/300Ah	●	/
804X1000	○	○	24V/350Ah		/	●	
Fork length	1150mm	●	●		24V/404Ah	/	○
	1220mm	○	○	Tyres	Polyurethane	●	●
External dimensions of fork	570mm	●	●	Startup Options	Universal keys (4 pieces)	●	●
Mast model	Wide view mast	●	●		Password lock	○	○
	Full free 3-stage mast	○	○		Card	○	○
Lifting height	2000mm	○	○	Plates	Plates in Chinese	●	●
	2500mm	○	○		Plates in English	○	○
	2700mm	○	○		Other languages signage	○	○
	3000mm	●	●		Rearview mirror	Without rear view mirror	●
	3300mm	○	○	With rear view mirror		○	○
	3500mm	○	○	Front lights	No installed	●	●
	3600mm	○	○		Install	○	○
	3700mm	○	○	Warning lights	Without warning lights	●	●
	4000mm	○	○		Rotating warning light	○	○
	4250mm	○	○		Without rotating buzzer warning light	○	○
	4350mm	○	○	Built-in Charger	No	●	●
	4500mm	○	○		50A Charger	○	○
4700mm	○	○	Vehicle Networking	○	○		
4800mm	○	○	External Charger	E24V100ALI-432E22U	○	○	
5000mm	○	○					
5400mm	○	○					
6000mm	○	○					
Steering mode	Electric steering	●	●				
Foldable Platform		●	●				
Arm Guard		●	●				
Solenoid Valve		●	●				
Analog Control Handle		●	●				

Standard: ● Optional: ○ Not available: /